

Helpful Tips for Refuse & Recycling

How can you make your garbage pickups more efficient? How can you make it safer for the city workers who pick up your trash? How can you get the maximum value from city services? Here are some helpful tips:



Sanitation Service: Place your refuse cart at your curb **by 7:00 a.m.** on the day of your pickup with the handle facing toward the house, not toward the street. **Crews will only empty city issued carts.**

Only bagged trash generated in your household goes in your cart. Anything other than bagged household trash placed inside the cart may result in the cart not being emptied. Place your cart far enough into the street that a car cannot pull up and block a truck from reaching it.

Be sure NOT to cover any utility meters or connections (water, gas, telephone) with trash. You will be responsible for any damage that occurs during pick-up.



Automated Trash Truck

Make it Safe. Look up to see if there is a 15 foot clearance for the trash truck to pick up your trash. Make sure your trash cart is not blocked by low hanging trees or wires. If you use syringes, put them in a covered container before placing them in a garbage bag or cart.

If your cart is **lost or stolen** there is a one-time replacement fee of \$55.00, which will be refunded if the cart is located at a later date. Additional carts may be obtained for a \$5.00 fee per cart per month. Repairs to carts (lids, wheels, etc) are made at no charge.



Rear Loader

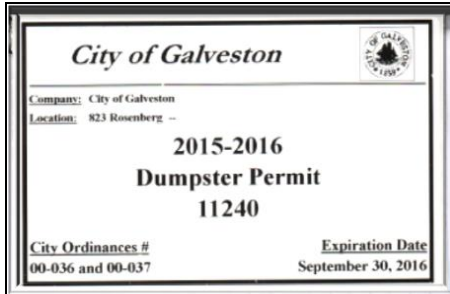
Place things that will not fit into the cart right next to it. Leaves and grass must be bagged. The City will pick up paint cans as long as the paint is dried and the can is sitting next to your trash cart. Dry paint by throwing away the lid and putting kitty litter or sand in the can. **If you have work done on your home, your contractor should remove debris and building materials.** TV's are picked up on Friday's. Please call to schedule the pickup.



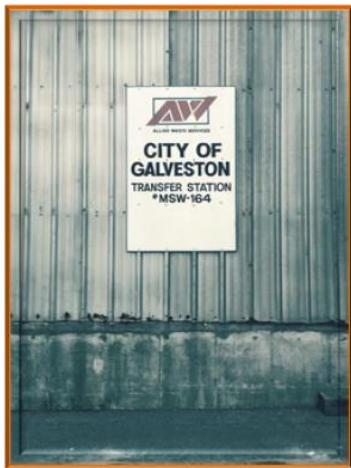
Litter Truck

Bulk trash pickup (furniture, appliances, white goods, large brush piles) will be picked up on your regular scheduled pickup day. **Freon must be removed by a certified tech from any appliance/white good(s) and red-tagged in order for sanitation crews to pick up.** **Stack clean brush neatly in one pile, no more than 5 feet in length.** Ensure that bulk piles are not placed over meters or under low hanging branches or wires. Crews will not be able to remove any pile if it is placed in any of these areas.

Helpful Tips for Refuse & Recycling



If you have a **dumpster**, it must have a permit by October 1 each year. To purchase a permit (there is a \$25.00 permit fee). Check www.galvestontx.gov to get a permit application and enclosure specifications. Dumpsters must have an enclosure on all four sides and be kept clean. If it is not possible to screen your dumpster, you may apply for a “license to use” in the Planning Department at City Hall. This license must be renewed annually. Please make disposal arrangements to have items that will not fit inside the dumpster removed.



The Transfer Station: The Transfer Station is located at 5515 Harborside Drive. Their hours are Monday through Friday from 7:30 a.m. to 4:45 p.m., and Saturday morning from 7:30 to 11:45 a.m. Galveston residents may make one trip per month, free, to the City transfer station with up to 1,000 pounds of material. A current water bill that matches a current valid driver’s license or a photo ID is required. Businesses are assessed a fee for this service.

Examples of what to bring to the transfer station: building materials, roofing materials, auto parts, and items that will not fit in your trash cart.

Do not bring the following: paint, gasoline, kerosene, concrete, tires, combustible materials, appliances that contain Freon, compressed aerosol cans.

To make any requests for Sanitation or Recycling services, or if you have questions or concerns, you may contact the Public Works & Municipal Utilities Department by calling (409)797-3630 or e-mail publicworks@galvestontx.gov.

Please visit our website at www.galvestontx.gov.

Thank you for helping us keep Galveston clean!



Helpful Tips for Refuse & Recycling



The Recycling Center is a self-service center located at 702 61st Street (just North of Broadway/I-45). Attendants are available to assist you from 8:00 a.m. - 4:45 p.m., Monday through Sunday. Convenient containers are inside the gate for after hour delivery.

Deposit unwanted or used tires (minimum of 5 per week) FREE to Island residents (proof of residency required). This service is not available to commercial businesses.

Did you know that Galveston offers a curb-side recycling pickup for senior & handicapped citizens? Recyclables must be separated into bags. Service is once per month and there is no fee associated with it.



Did you know that fats, oils and grease can clog the sewer lines if poured down the drains? Residents can safely deposit their fats, oils and grease at the Recycling Center.



The Recycling Center accepts glass, metals, plastic, paper, cardboard, oils/fats/grease & tires. For a complete listing of what is accepted, please see our webpage.

Recycling works best when you begin with recycled products. It extends the life of the landfill; saves the trees, water, fish, and creates jobs. Living on an island with limited natural resources, these are critically important! You are helping others as well as yourselves, for generations to come.

Please visit the Recycling Center webpage for other useful information.

Please recycle!